

A close-up portrait of a man with short, dark hair and a light beard, looking off to the side. He is wearing a dark blue, collared shirt over a light blue button-down shirt. The background is a blurred outdoor setting with green foliage.

JAMES
HARVEST
SPORTSWEAR

J A M E S
HARVEST
sports  *wear*

SINCE THE START IN 1988, THE CORPORATE
IDENTITY CLOTHING FROM JAMES HARVEST HAS
HELPED THOUSANDS OF COMPANIES TO CREATE A
GREAT TEAM SPIRIT AND A COHERENT PROFILE.
AVAILABLE IN OVER 26 COUNTRIES AND WITH AN
EXTENSIVE RANGE OF FASHION-FORWARD STYLES,
THE JAMES HARVEST RANGE IS THE PERFECT
CHOICE TO SHOWCASE YOUR CORPORATE IDENTITY.

THE JAMES HARVEST SPORTSWEAR COLLECTION IS BASED ON AMERICAN COLLEGIATE FASHION AND IS CHARACTERISED BY ITS HIGH QUALITY.

WE PUT A LARGE AMOUNT OF EFFORT INTO THE DESIGN OF OUR STYLES IN ORDER TO MAKE THE CLOTHES BOTH FUNCTIONAL AND FASHIONABLE.

EXPERIENCE CONTINUES TO SHOW THAT MANY BUSINESS AND ORGANISATIONS THAT REGARD QUALITY AS AN IMPORTANT ELEMENT IN THEIR MARKETING COMMUNICATIONS REGULARLY CHOOSE JAMES HARVEST SPORTSWEAR AS THEIR SUPPLIER OF IDENTITY CLOTHES AND ADVERTISING GARMENTS.



JAMES
HARVEST
sports *wear*

POLOS & T-SHIRTS

9 BROOKINGS	13 LARKFORD	19 TWOVILLE
9 NEPTUNE	13 PORTWILLOW	19 WHAILFORD
11 SUNSET	15 AMERICAN U	
11 GREENVILLE	15 AMERICAN V	

SWEATERS

12 PARKWICK	21 ALDER HEIGHTS	23 WESTWOOD HEIGHTS
17 CORNELL	21 MELVILLE HEIGHTS	
17 DUKE	23 HARDIN HEIGHTS	

SHIRTS

25 BURLINGHAM	27 TREEMORE	31 HIGHWOODS
25 ACTON	29 REDDING	
27 JUPITER	29 TOWNSEND	

KNITS

31 PONCHO	37 ASHLAND V	39 FLATWILLOW
35 ASHLAND TURTLE	37 ASHLAND U	
35 ASHLAND CARDIGAN	39 BROCKWAY	

OUTERWEAR

40 MYERS	45 SANTA ANA	53 WINCHESTER
41 LOCKWOOD	47 FRANKLIN	53 LODGETOWN
41 MILES	47 NORTHVILLE	54 KINGSPORT
43 NORTHDERRY	49 BRINKLEY	55 HARRINGTON
43 COVENTRY	49 WOODLAKE HEIGHTS	55 HUNTINGVIEW
45 RICH HILL	51 DEER RIDGE	
45 RICHMOND	51 DEER RIDGE VEST	

TROUSERS & CAPS

57 OFFICER	57 L.A.	57 BURNWOOD
------------	---------	-------------

SYMBOLS



CONTAINS RECYCLED MATERIALS



CONTIENT DU COTON ORGANIQUE



OEKO-TEX TESTED



UP TO 60°C WASH



EASY CARE TREATED



STRETCH



TAPED SEAMS



WATER RESIST



WATERPROOF MATERIAL >2K



WATERPROOF AND TAPED SEAMS

Responsibility

SUSTAINABLE PRODUCTS

We believe in classic design and quality products - a concept that will never be out-of-fashion. Quality is a good way to ensure long-lasting use and sustainable consumption. It is extremely important that all items of James Harvest Sportswear are safe and free from restricted substances.

All suppliers of James Harvest Sportswear must follow the requirements in our Restricted Substance List. The list has been designed in accordance with legislations such as REACH, but also taking into account industry recommendations and standards. As a result, our requirements are often stricter than the applicable legislation. We take part of the Swedish Chemicals Group to receive the most updated information on chemical legislation and developments. With this information we can actively work to reduce and replace chemicals in line with best available technique.

IMPROVING WORKING CONDITIONS

We are aware of the great responsibility that comes with sourcing goods in countries with different legal cultures and labour conditions. We must ensure that the business operations of our suppliers respect national requirements as well as international conventions on human rights. A successful work requires devotion and some amount of patience. Many of the challenges we face are global problems like poverty and malfunctioning welfare systems. In this sense, social compliance does not offer a quick-fix.

We believe it is essential to be presented on-site. For this reason, we have local offices in Asia taking care of the everyday-work with supplier auditing, monitoring and dialogue. Our CSR-staffs are educated and well-experienced on labour conditions and environmental aspects of the production sites. Their work is leading the development.

WHAT DO WE EXPECT FROM SUPPLIERS IN TERMS OF LABOUR CONDITIONS?

James Harvest Sportswear has adopted the Amfori BSCI Code of Conduct, used for members of the Amfori BSCI (Business Social Compliance Initiative). It contains requirements on minimum wage, working hours and the prohibition of child labour, amongst several other requirements from international conventions. These are our main requirements on all suppliers. We also have a commitment towards Amfori BSCI to engage our suppliers in third party examination by independent auditors. We consider it a quality assurance to have both internal and external audits. A Amfori BSCI-report is not a certificate. It is a tool for responsible brands to be used in systematic monitoring and improving routines. Even the best supplier could occasionally end up with findings. Social

compliance must be controlled and implemented in a management system.

Amfori BSCI also enables brands to cooperate. Today, more than 1300 companies worldwide have joined the Amfori BSCI. This empowers our voice and influence in the social dialogue.

New Wave Group, our mother company, has signed the International Accord for Health and Safety in the Textile and Garment Industry. The Accord is a binding agreement designed to improve fire- and building safety for the textile industry in Bangladesh. The Accord includes inspections, fire safety training as well as effective remediation and renovations. The ambition is to expand the program to other production countries. The Accord is a unique initiative that has significant impact on the daily life of millions of textile workers. We are proud to be a part of this initiative.

MORE ON THE ENVIRONMENT

James Harvest Sportswear has two main strategies to decrease environmental impact and to cut our emissions of greenhouse gas. First of all, we must influence the transportation companies that we are working with. Our membership in "Clean Shipping Index" aims to impact the shipping companies to use cleaner vessels by ranking the most high-performing ships.

Our group of companies works with some of the largest transportation companies on the market, all of which have environmental programs in place for their operations. Secondly, we always strive to improve our internal logistics and work methods. Within our group, we club together as much as possible of our shipments and transportations. In addition to protecting the environment, it also contributes to the streamlining of our operations.

RECYCLING FOR A SUSTAINABLE SOCIETY

To collect and recycle waste packages is a wonderful way to reduce environmental impact and create cradle-to-cradle circulation. James Harvest Sportswear embraces the collecting system where we operate. The Green Dot is our credential of participating in the Producer Responsibility Organization.

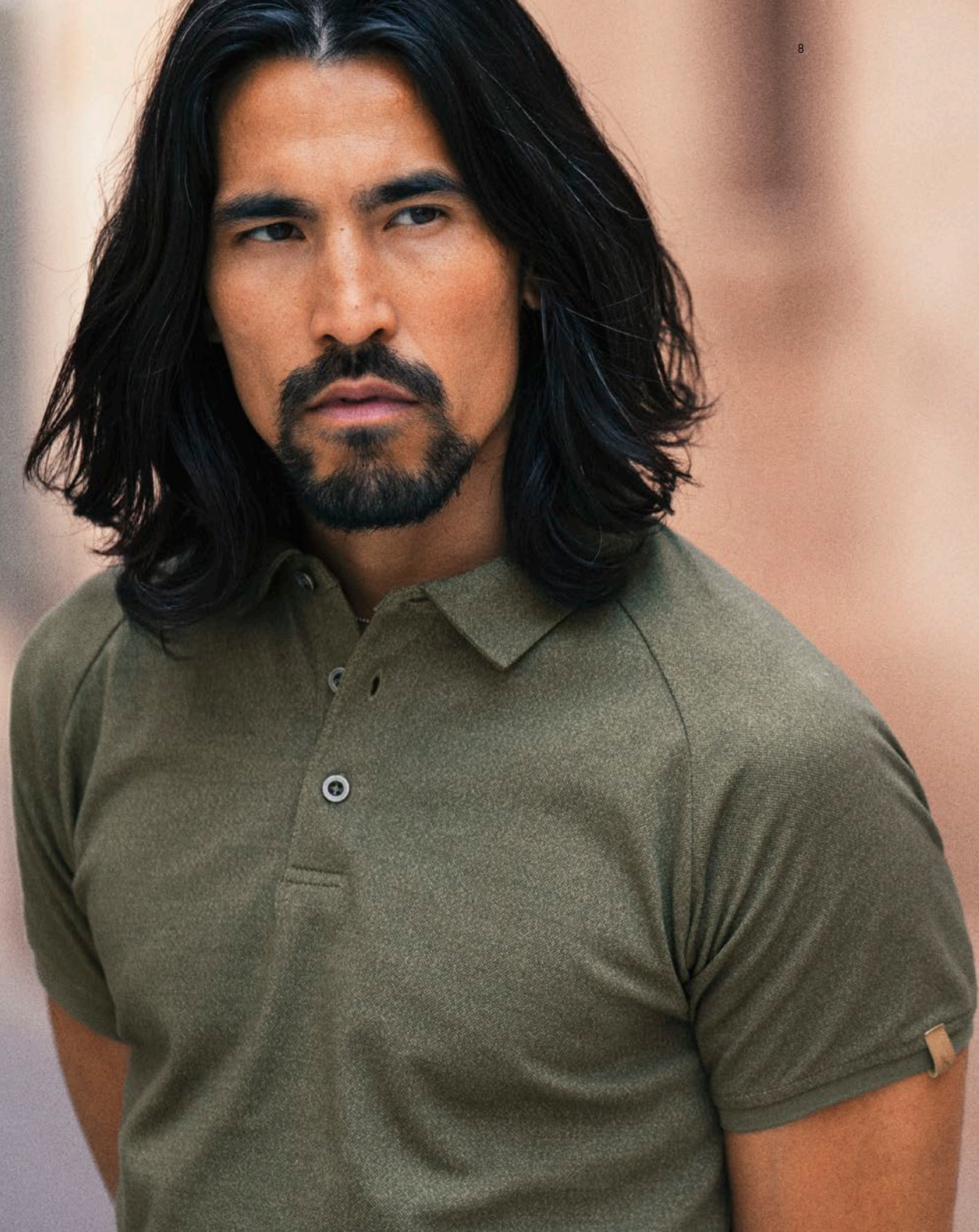
To learn more about our work with CSR, visit www.texet.se



7



Don't miss our
garments containing
organic cotton and/or
recycled materials.





REGULAR FIT



MODERN FIT



WOMAN FIT



100 WHITE



704 MOSS GREEN



600 NAVY



900 BLACK



BROOKINGS REGULAR 2135037 ♂
 BROOKINGS MODERN 2135038 ♂
 BROOKINGS WOMAN 2125037 ♀

S-4XL
 S-XXL
 XS-XXL

Functional polo shirt with raglan sleeves, made out of a cotton-recycled polyester-elastane blend for optimal comfort in your active, everyday life. 3 metal coloured buttons, side slits and 1x1 rib at bottom sleeves. The Brookings polo is available in three stylish cut; the traditional Regular, the more fitted Modern and the carefully figured Woman.

52% COTTON, 45% RECYCLED POLYESTER, 3% ELASTANE, 190 G/M²



NEPTUNE REGULAR 2135031 ♂
 NEPTUNE MODERN 2135032 ♂
 NEPTUNE WOMAN 2125033 ♀

S-4XL
 S-XXL
 XS-XXL

Polo shirt with side slits and matching buttons. Enzyme wash for a softer and smoother surface. The treatment makes the polo shirt pre shrunk. Neptune is available in three stylish cuts; the traditional Regular, the more fitted Modern and the carefully figured Woman.

100% COMBED COMPACT COTTON, 200 G/M²



REGULAR FIT



MODERN FIT



WOMAN FIT



100 WHITE



212 DEEP SUN



400 RED



488 DARK RED



600 NAVY



622 PETROL



630 BLUE HEAVEN



919 ANTHRACITE



900 BLACK





REGULAR FIT



MODERN FIT



WOMAN FIT



100 WHITE 600 NAVY



308 ORANGE VINTAGE 668 LIGHT TURQUOISE



400 RED 729 SPORT GREEN



471 LIGHT PINK 900 BLACK



SUNSET REGULAR 2135033 ♂
 SUNSET MODERN 2135034 ♂
 SUNSET WOMAN 2125034 ♀

Polo shirt with side slits and white buttons in a comfortable cotton/Lycra® material. Sunset is available in three stylish cuts; the traditional Regular, the more fitted Modern and the carefully figured Woman.

95% COMBED COMPACT COTTON, 5% LYCRA®, 200 G/M²



S-4XL
 S-XXL
 XS-XXL



REGULAR FIT



MODERN FIT



WOMAN FIT



100 WHITE 600 NAVY



400 RED 729 SPORT GREEN



631 BRIGHT BLUE 900 BLACK



GREENVILLE REGULAR 2135035 ♂
 GREENVILLE MODERN 2135036 ♂
 GREENVILLE WOMAN 2125036 ♀

Polo shirt with a classic white stripe at collar and sleeve. Comfortable stretch material in Lacost knit. Enzyme washed. Three mother of pearl-look buttons. Woman version with shorter placket and no buttons. Grey stripe on white polo shirts. Greenville is available in three stylish cuts; the traditional Regular, the more fitted Modern and the carefully figured Woman.

95% RINGSPUN, COMBED COTTON, 5% LYCRA®, 200 G/M²



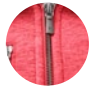
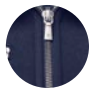
S-4XL
 S-XXL
 XS-XXL



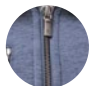
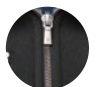
MEN



WOMAN

131 GREY
MELANGE406 RED
MELANGE

600 NAVY

606 DARK BLUE
MELANGE

900 BLACK

PARKWICK 2111033 ♂
PARKWICK WOMAN 2121034 ♀

S-3XL
XS-XXL

Hooded jacket in double face with fleece on the inside. Metal zip front and right chest pocket. Rib at bottom hem and sleeve cuffs.

100% COTTON SHELLFABRIC, 100% POLYESTER INSIDE, 320 G/M²



MEN



WOMAN



131 GREY MELANGE



406 RED MELANGE



506 LIGHT BLUE MELANGE



606 DARK BLUE MELANGE



906 BLACK MELANGE



LARKFORD 2135030 ♂
LARKFORD WOMAN 2125031 ♀

S-3XL
XS-XXL

Piqué shirt with button-down collar, detail in Oxford inside collarstand, rib in cuffs in contrast.

100% COMPACT COTTON, 250 G/M²



PORTWILLOW 2114008 ♂

XS-3XL

Roundneck T-shirt with chest pocket in contrast colour.

100% COMBED, RINGSPUN COTTON, 160 G/M². PRE-SHRUNK.



131 GREY MELANGE



406 RED MELANGE



506 LIGHT BLUE MELANGE



606 DARK BLUE MELANGE



906 BLACK MELANGE





MEN



WOMAN



100 WHITE



555 FADED BLUE



121 ASH



600 NAVY



400 RED



900 BLACK

AMERICAN U 2134017 ♂
AMERICAN U WOMAN 2124008 ♀



S-3XL
XS-XXL

U-neck T-shirt for men. 2-layered stretch rib in the neck. Oeko-Tex certifierad.

100% RING-SPUN, COMBED AND ENZYME-WASHED COTTON (MELANGE 95% COTTON, 5% VISCOSE)



100 WHITE



555 FADED BLUE



121 ASH



600 NAVY



400 RED



900 BLACK

AMERICAN V 2134018 ♂

S-3XL



Crewneck T-shirt for men and women. 2-layered stretch rib in the neck. Oeko-tex certified.

100% RING-SPUN, COMBED AND ENZYME-WASHED COTTON (MELANGE 95% COTTON, 5% VISCOSE)



HARVEST



MEN



WOMAN



121 ASH



555 FADED
BLUE



600 NAVY



900 BLACK

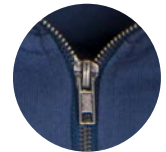


CORNELL 2132022 ♂
CORNELL WOMAN 2122038 ♀

S-3XL
XS-XXL

Classic college crewneck sweater.

100% TERRY COTTON (MELANGE: 95% COTTON, 5% VISCOSE), ENZYME WASH, 280 G/M²



MEN



WOMAN



121 ASH



555 FADED
BLUE



600 NAVY



900 BLACK

DUKE 2132023 ♂
DUKE WOMAN 2122039 ♀

S-3XL
XS-XXL

Hood jacket. Metal zip at center front and pockets. Drawstring at hood.

100% TERRY COTTON (MELANGE: 95% COTTON, 5% VISCOSE), ENZYME WASH, 280 G/M²







MEN



WOMAN



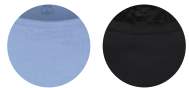
100 WHITE

NEW COLOR
600 NAVY



120 GREY MELANGE

704 MOSS GREEN



514 SUMMER BLUE

900 BLACK

TWOVILLE 2114005 ♂
TWOVILLE WOMAN 2124005 ♀

Modern style round neck t-shirt. Slub tricot cotton fabric.

100% COTTON (120 GREY MEL. 85% COTTON/15% VISCOSE), 160 G/M²



S-3XL
XS-XXL



MEN



WOMAN



100 WHITE

NEW COLOR
600 NAVY



120 GREY MELANGE

704 MOSS GREEN



900 BLACK

514 SUMMER BLUE

WHALFORD 2114006 ♂
WHALFORD WOMAN 2124006 ♀

V-neck t-shirt in modern style. Slub tricot cotton fabric.

100% COTTON (120 GREY MEL. 85% COTTON/15% VISCOSE), 160 G/M²



S-3XL
XS-XXL





MEN



WOMAN



120 GREY MELANGE



600 NAVY



704 MOSS GREEN



900 BLACK



NEW

ALDER HEIGHTS 2132024 ♂
ALDER HEIGHTS WOMAN 2122040 ♀



S-3XL
XS-XXL

College sweater. Certifications: Oeko-Tex, recycled polyester and ecological cotton.

85% ORGANIC COTTON, 15% RECYCLED PES, 300 G/M²



MEN



WOMAN



120 GREY MELANGE



600 NAVY



704 MOSS GREEN



900 BLACK



NEW

MELVILLE HEIGHTS 2132026 ♂
MELVILLE HEIGHTS WOMAN 2122042 ♀



S-3XL
XS-XXL

Full zip sweater with half-moon in the neck. Contrast, metal look nano membrane zip at center front and side pockets. Brushed on the inside. Ribbed ending at sleeves and bottom hem. Oeko-Tex 100 certified.

85% ORGANIC COTTON, 15% RECYCLED PES, 300 G/M²





MEN



WOMAN



120 GREY MELANGE



600 NAVY



704 MOSS GREEN



900 BLACK



NEW

HARDIN HEIGHTS 2132025 ♂
HARDIN HEIGHTS WOMAN 2122041 ♀



S-3XL
XS-XXL

Hoodie with raglan sleeves and half-moon in the neck. Tone on tone drawstrings with rubber bullet point end. Kangaroo pocket on the front. Brushed on the inside. Ribbed ending at sleeves and bottom hem. Certificates: Oeko-Tex 100, recycled polyester & ecological cotton.

85% ORGANIC COTTON, 15% RECYCLED PES, 300 G/M²



NEW

WESTWOOD HEIGHTS 2132027 ♂
WESTWOOD HEIGHTS WOMAN 2122043 ♀



S-3XL
XS-XXL

Hooded sweater with full zip and half-moon in neck. Contrast, metal look nano membrane zip at center front and side pockets. Tone in tone drawstrings with rubber bullet point end. Brushed inside. 1x1 rib ending at sleeves and bottom hem. Oeko-Tex 100 certified.

85% ORGANIC COTTON, 15% RECYCLED POLYESTER, 300 G/M²



MEN



WOMAN



120 GREY MELANGE



600 NAVY



704 MOSS GREEN



900 BLACK





MEN



WOMAN



100 WHITE



501 LIGHT BLUE



601 NAVY



901 BLACK



BURLINGHAM 2113038 ♂
BURLINGHAM WOMAN 2123028 ♀

S-3XL
XS-XXL

Jersey shirt with oxford look. Woven details inside collar and side slits. Button down collar on men. Pearly colored buttons. Adjustable cuffs.

60% COTTON/40% POLYESTER , 165 G/M²



MEN



WOMAN



100 WHITE



500 LIGHTBLUE



600 NAVY



900 BLACK

NEW

ACTON 2113040 ♂
ACTON WOMAN 2123031 ♀

S-3XL
XS-XXL

Businessshirt with hidden button-down collar and adjustable sleeve cuffs. Easy care treated fabric. Tone in tone buttons. Modern fit.

55% COTTON, 45 POLYESTER, 145 G/M²







MEN



WOMAN



JUPITER 2113035 ♂
JUPITER WOMAN 2123025 ♀

S-3XL
XS-XXL

Denim shirt. Player's choice fitting. Button down collar, adjustable sleeve cuffs. Chest pocket on both sides. Checked pattern contrast on the inside of yoke and cuffs. Slightly curved bottom hem

100% COTTON. DENIM LOOK, 135 G/M²



592 BLUE
DENIM



992 BLACK
DENIM



MEN



WOMAN

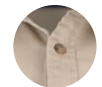


TREEMORE 2113037 ♂
TREEMORE WOMAN 2123027 ♀

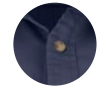
S-3XL
XS-XXL

Twill shirt in classic denim style cut. Western yoke and pockets with flaps. Soft collar, adjustable cuffs and curved bottom hem. Enzyme washed.

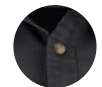
100 % COTTON TWILL, 150 G/M².



175 SAND



600 NAVY

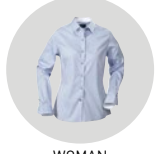


900 BLACK





MEN



WOMAN



100 WHITE



506 BLUE



914 GREY



REDDING 2113033 ♂
REDDING WOMAN 2123023 ♀

S-3XL
XS-XXL

Modern fit, high quality oxford shirt with Easy Care treatment. Tone-in-tone buttons and necktape in contrast colour.

100% COMBED COTTON, 135 G/M².



MEN



WOMAN



100 WHITE



503 LIGHT-BLUE



603 NAVY

NEW

TOWNSEND 2113041 ♂
TOWNSEND WOMAN 2123032 ♀

S-3XL
XS-XXL

Linen-blend shirt with Mao collar and adjustable sleeve cuffs. Mother of pearl-look buttons. Contrast fabric on inside of yoke and cuffs. Yarn dyed.

74% COTTON, 26% LINEN; 125 G/M²





142 GREY
MELANGE



252 SAFFRON



486 WINE



600 NAVY



605 DENIM
MELANGE



710 FOREST
GREEN



900 BLACK

PONCHO 2127000 ♀

ONE SIZE

Fine knitted poncho with flatknitted edges. One size

50 % WOLL, 50% ACRYLIC (DRALON®). 250 G/M².



HIGHWOODS 2111040

XXS-3XL

Unlined unisex overshirt in cotton twill fabric with a collar, yoke at the back and buttons down the front. Flap chest pockets with a button. Long sleeves with a sleeve placket and buttoned cuffs. Curved bottom hem.

100% COTTON, 300 G/M²



600 NAVY



900 BLACK



THE ULTIMATE FAMILY of FINE KNITS FROM

HARVEST

MEET THE



ASHLANDS

*Ashland
Turtle*



100% COTTON

Ashland V



100% COTTON

Ashland U



100% COTTON

*Ashland
Cardigan*



100% ORGANIC COTTON







MEN



WOMAN



140 GREY MELANGE



600 NAVY



900 BLACK

ASHLAND TURTLE 2112513 ♂
ASHLAND TURTLE WOMAN 2122510 ♀



S-3XL
XS-XXL

Turtleneck knitted sweater. 1x1 rib at the bottom, bottom sleeves and roller neck.
Oeko-Tex 100 certified.

100% COTTON, 12 GG



MEN



WOMAN



140 GREY MELANGE



600 NAVY



900 BLACK



ASHLAND CARDIGAN 2112514 ♂
ASHLAND CARDIGAN WOMAN 2122511 ♀

S-3XL
XS-XXL

Knitted cardigan with metal zipper. 1x1 rib at collar, sleeves, and bottom seam (men).
Oeko-Tex 100 certified.

100% ORGANIC COTTON, 12 GG





MEN



WOMAN



140 GREY MELANGE



609 BLUE MELANGE



600 NAVY



909 ANTHRACITE MELANGE



900 BLACK MELANGE

ASHLAND V 2112507 ♂
ASHLAND V WOMAN 2122505 ♀

S-3XL
XS-XXL

Fine knit V-neck cotton sweater, 1 x 1 rib at cuff and hem. Double flatknit at neck.

100% COTTON, 12 GG



MEN



WOMAN



140 GREY MELANGE



600 NAVY



900 BLACK

ASHLAND U 2112512 ♂
ASHLAND U WOMAN 2122509 ♀

S-3XL
XS-XXL

U-neck knitted sweater. 1x1 rib at the bottom and bottom sleeves. Double-folded edge at the neck. Oeko-Tex 100 certified.

100% COTTON, 12 GG







138 GREY
MELANGE



600 NAVY



900 BLACK

BROCKWAY 2112511 ♂

XS-3XL

Heavy knit Full-Zip Cardigan. Metal zip with leather-like zip puller. Elbow patches (flat knitted in same yarn). Knitted rib at bottom, btm sleeve and collar (double layer).

50% COTTON, 50% ACRYLIC, 7 GG, 3-PLY



138 GREY
MELANGE



600 NAVY



900 BLACK

FLATWILLOW 2112505 ♂

XS-3XL

Heavy knit 1/2-Zip Sweater. Metal zip with leather-like zip puller. Elbow patches (flat knitted in same yarn). Knitted rib at bottom, btm sleeve and collar (double layer).

50% COTTON, 50% ACRYLIC, 7 GG, 3-PLY



MEN



WOMAN



542 SPORTY
BLUE

600 NAVY



900 BLACK





WP800 / **WP 10.000**
 **MVP 6000** / **MVP 4600**

MYERS 2131041 ♂
MYERS WOMAN 2121038 ♀

S-3XL
XS-XXL

Hybrid jacket of wind and water repellent softshell and heat-quilted interlock with high breathability. Softshell parts in sleeves, shoulders and hood. Body of heat-quilted interlock with microfleece inside. C6 treatment of the entire jacket. Adjustable hood opening and lower edge with elasticated waistband and Velcro strap. Zipper in inner pocket. Mesh-lined front piece. Extra ventilation through front pockets.

SOFT SHELL; 96% POLYESTER, 4% ELASTANE, 280 G/M². BONDED WITH 100% PES FLEECE. WP = 10,000, MVP = 4,600. BODY: THERMAL QUILTED INTERLOCK WITH MICRO FLEECE INSIDE: 100% POLYESTER, 280 GR / M². WP = 800, MVP = 6,000



MEN



WOMAN

542 SPORTY
BLUE

600 NAVY



900 BLACK



LOCKWOOD 2131502 ♂
LOCKWOOD WOMAN 2121502 ♀



WP 3000
MVP 3000

S-3XL
XS-XXL

Durable softshell jacket with good breathability. The fleece side is on the inside of the body, collar and sleeve top and on the outside at the sides and lower arms. Stretch edge band at the bottom and sleeve end.

PIQUÉ KNITTED SOFTSHELL, PLATED WITH FLEECE. WP3000/MVP3000. 100% POLYESTER, 320 G/M²



MILES 2131501 ♂
MILES WOMAN 2121501 ♀

S-3XL
XS-XXL

Smooth fleece jacket. The material is "Waffle-Knitted" for best insulation and moisture transport. Mesh lined pocket bags that also contribute to extra ventilation openings. Wind placket behind the main zipper. Thumb opening at the sleeve end.

94% POLYESTER, 6% ELASTANE, 260 G/M².



MEN



WOMAN

542 SPORTY
BLUE

600 NAVY



900 BLACK





MEN



WOMAN



100 WHITE



137 LIGHT GREY



600 NAVY



900 BLACK

NORTHDERRY 2131500 ♂
NORTHDERRY WOMAN 2121500 ♀

S-3XL
XS-XXL

Thick fleece jacket with proven high resistance to pilling. The design is modern and sporty, fitting is modern and comfortable. Hood, contrasting flat lock seams and thumbhole at sleeve end. Elastic drawstring at hood and hem.

100% POLYESTER, 300 G/M²



MEN



WOMAN



WP 5000
MVP 5000

COVENTRY 2131037 ♂
COVENTRY WOMAN 2121026 ♀

S-3XL
XS-XXL

Functional sport jacket with taped seams and waterproof zippers. Zipper opening at back and hood lining for embroidery and print. Detachable hood. Elastic adjustment at bottom hem.

100% POLYESTER WP 5000/MVP5000, TAPED SEAMS

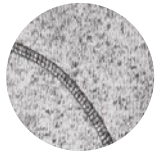


600 NAVY



900 BLACK





MEN



WOMAN



135 GREY MELANGE



607 NAVY MELANGE



907 ANTHRACITE MELANGE



RICH HILL 2131503 ♂
RICH HILL WOMAN 2121503 ♀

S-3XL
XS-XXL

Heavy knit fleece jacket. 100% Polyester yarn with mélangé effect. Brushed inside. Zippers and flatlock seams in contrast color. Zipped front pockets. Elastic bindings at bottom and btm sleeves.

100% POLYESTER YARN WITH MÉLANGE EFFECT. BRUSHED INSIDE.



RICHMOND 2132017 ♂
SANTA ANA 2122034 ♀

S-3XL
XS-XXL

Heavy knit fleece jacket with decorative flatlock seams and elastic tipping. Zippers at centre front and front pockets. Brushed on the inside for a soft feeling. Anti-pilling treated.

100 % POLYESTER, 320 G/M²



MEN



WOMAN



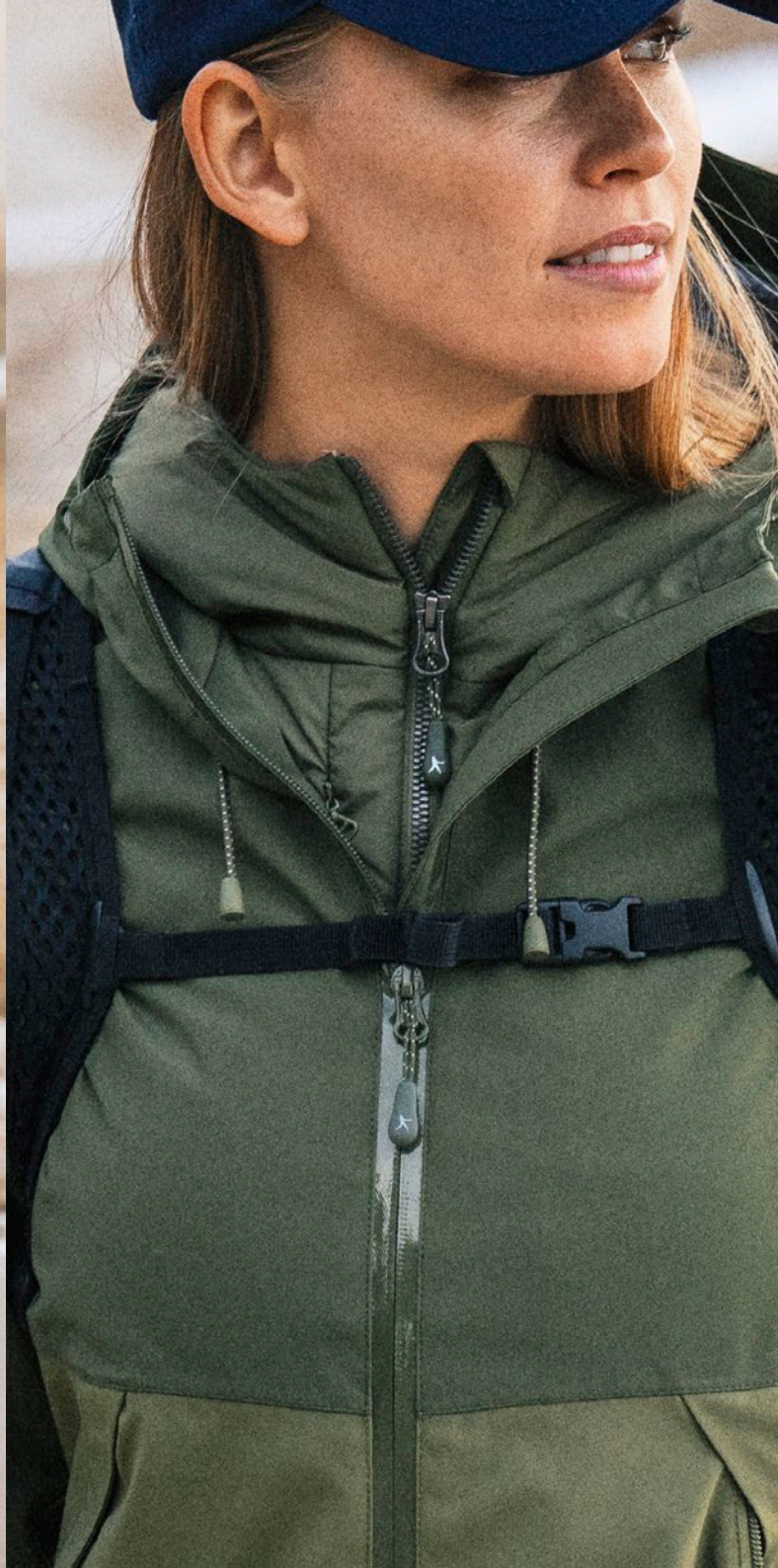
135 GREY MELANGE



607 NAVY MELANGE



907 ANTHRACITE MELANGE





MEN



WOMAN



600 NAVY



NEW COLOR

704 MOSS GREEN



900 BLACK



FRANKLIN 2111039 ♂ S-3XL
FRANKLIN WOMAN 2121043 ♀ XS-XXL

Lightweight jacket with recycled Repreve padding. Fully lined with inner left chest pocket. YKK main zipper and blind zipped chest and side pockets. Ribbed sleeve cuff and bottom seam.

SHELL FABRIC: 100% RECYCLED POLYESTER, 56 G/M² WITH 100% RECYCLED POLYESTER REPREVE PADDING. LINING: 100% NYLON



MEN



WOMAN



600 NAVY



704 MOSS GREEN



900 BLACK

NEW



WP 5000
MVP 5000

NORTHVILLE 2111041 ♂ S-3XL
NORTHVILLE WOMAN 2121044 ♀ XS-XXL

Functional, two-tone shell jacket with taped seams. Waterproof zipper at center front and reversed nylon zippers at side pockets. Velcro adjustable sleeves. Mesh lining with inner pocket. Reflective tag on center back. Hood and bottom hem adjustable with elastic cord.

SHELL: 50% POLYESTER, 50% RECYCLED POLYESTER, WP 5000/ MVP 5000, CO BIONIC-FINISH ECO WATER RESISTANT FINISH. LINING: 100% POLYESTER MESH. SLEEVE LINING: 100% RECYCLED POLYESTER



- Patata
- Gamb
- Pulpo
- Bog
- Pin

Bravas=
al ajillo=
Gallega=
tas=
de Padron
(vegetal)

de
naranj
- Boca d'ile
- San wic
- Ensalad
- Paella



MEN



WOMAN



WP 5000
MVP 5000

BRINKLEY 2111036 ♂
BRINKLEY WOMAN 2121039 ♀

S-3XL
XS-XXL

Winter parkas with real down feeling. All vital seams taped. Adjustable with elastic cord at hood opening and at waist. Metal zip at front. Magnet buttons under front wind shield and under pocket flaps. Hidden push buttons at top and bottom front. Zipped chest pockets. 1 "Napoleon" pocket. Adjustable sleeve with push buttons and knitted rib inside.

100% POLYESTER, SHELL FABRIC; 100% PES WITH MEMBRANE, 5000WP/ 5000MVP. BIONIC-FINISH ECO WATER RESISTANT FINISH. PADDING FROM RECYCLED PES (BLUESIGN), 160 GSM (2,6 - 2,8 CLO) IN BODY, 140 GSM (2,3 - 2,5 CLO) IN SLEEVES. ALL VITAL SEAMS TAPED



600 NAVY



900 BLACK



MEN



WOMAN



WP 3000
MVP 3000

WOODLAKE HEIGHTS 2111037 ♂
WOODLAKE HEIGHTS WOMAN 2121041 ♀

S-3XL
XS-XXL

Padded winter jacket. Reversed waterproof zipper at center front and side pockets. Side pockets finished together with the seam of the jacket on the inside, so they can be used as inner pockets as well. Adjustable press button closure at bottom sleeves. Hood adjustable with elastic cords on the sides, finished with an elastic tape at the seam.

SHELL: 100% RECYCLED PES, 230 G/M², BONDED WITH A PU MEMBRANE, WP 3000/ MVP 3000. PADDING: 100% RECYCLED PES REPPEVE PADDING (BLUESIGN)



600 NAVY

704 MOSS
GREEN

900 BLACK





MEN



WOMAN



Thermo/ite® 

DEER RIDGE 2131039 ♂
DEER RIDGE WOMAN 2121032 ♀

S-3XL
XS-XXL

Quilted lightweight jacket with Thermo/ite® Micro. Fully lined. Hidden hood in the collar (invisible zip). Reversed coil zippers. Elastic binding at bottom hem and sleeves. The jacket can be tucked into the frontpocket as a travelbag.

SHELL FABRIC; 100% PES, CIRE FINISH ON THE INSIDE, 56 GSM WITH 100% PES PADDING (THERMOLITE® MICRO, 60 GSM). LINING; 100% NYLON



600 NAVY



900 BLACK



Thermo/ite® 

DEER RIDGE VEST 2131040 ♂
DEER RIDGE VEST WOMAN 2121037 ♀

S-3XL
XS-XXL

Quilted lightweight vest with Thermo/ite® Micro. Fully lined. Reversed coil zippers. Elastic binding at bottom hem and arm openings. The vest can be tucked into the frontpocket as a travelbag.

SHELL FABRIC; 100% PES, CIRE FINISH ON THE INSIDE, 56 GSM WITH 100% PES PADDING (THERMOLITE® MICRO, 60 GSM). LINING; 100% NYLON



MEN



WOMAN



600 NAVY



900 BLACK





MEN



WOMAN



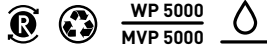
600 NAVY



704 MOSS GREEN



900 BLACK

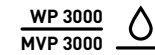


WINCHESTER 2111038 ♂
WINCHESTER WOMAN 2121042 ♀

S-3XL
XS-XXL

Padded jacket with raglan sleeves. Bonded with fleece.

50% RECYCLED POLYESTER /
50% POLYESTER,
BONDED WITH FLEECE, C6 FINISHING



LODGETOWN 2131042 ♂
LODGETOWN WOMAN 2121040 ♀

S-3XL
XS-XXL

Wind and water repellent softshell jacket. Reversed waterproof zipper at center front and side pockets. Inner pocket with zipper on the left side. Detachable hood. Adjustable velcro closure at bottom sleeves. Hood and seam are adjustable with elastic cords. Hidden embroidery zipper on the inside.

SHELL: 100% POLYESTER, 285 G/M², BONDED WITH 100% POLYESTER BIRDS EYE, WP 3000/MVP 3000. LINING: 100% POLYESTER (SLEEVES) + 100% POLYESTER MESH (BODY)



MEN



WOMAN



600 NAVY



704 MOSS GREEN



900 BLACK



MEN



WOMAN

WP 3000
MVP 3000



KINGSPORT 2111032 ♂
KINGSPORT WOMAN 2121033 ♀

S-3XL
XS-XXL

Light padded jacket with hidden hood in the collar. Two bellow pockets and two slanted chest pockets with visible metal zippers.

100% POLYESTER, PADDING 100% POLYESTER, 80 G/M²



900 BLACK



400 RED

722 FOREST
GREEN

900 BLACK



HARRINGTON 2111031 ♂

XS-3XL

Unisex jacket in timeless design. Metal zip at center front and right chest pocket. Outside pockets with pushbuttons. Knitted rib at bottom hem, bottom sleeves and top of collar. Lining at the back in checked contrast. Left inner pocket with zip and right inner pocket with button.

SHELL 50% COTTON, 50% POLYESTER. LINING: 75% CO, 25% POLYESTER. SLEEVE LINING: 100% POLYESTER.



MEN



WOMAN



600 NAVY



900 BLACK



HUNTINGVIEW 2111030 ♂ HUNTINGVIEW WOMAN 2121030 ♀

S-3XL
XS-XXL

Trendy quilted jacket. Five front pockets and two inside pockets. Soft fabric inside the two big front pockets to keep hands warm. Snap buttons with embossed Harvest logo at front pockets, cuffs and collar flap.

100% POLYESTER



HARVEST



MEN



WOMAN



180 BEIGE

556 LIGHT
BLUE

591 BLUE



600 NAVY

704 MOSS
GREEN

802 CAMEL



900 BLACK



936 GREY



OFFICER 2116004 ♂ W29-30-31-32-33-34-36-38-40 / L32-36
OFFICER WOMAN 2126006 ♀ W25-26-28-29-30-32-34-36 / L32-34

Modern, well-fitted pants in an agreeable, soft material for optimal comfort and freedom of movement. The combination of cotton and elastane ensures that the pants goes back to its original fit wash after wash. The fabric is treated with an enzyme treatment which pre-shrinks the material and makes it soft and dust repellent. Men: Weltd back pockets with contrasting bartacking stitches. Women: Patched back pockets and adjusted side pockets for an extra feminine touch.

98% COTTON, 2% ELASTHAN, 280-290G/M², YKK ZIPPER



100 WHITE



400 RED



600 NAVY



900 BLACK

L.A. 2137002 ♂

ONE SIZE

Cap in brushed cotton twill with precurved peak and adjustable Velcro strap at back.

100% COTTON

630 BLUE
HEAVEN

600 NAVY



900 BLACK

BURNWOOD 2137003 ♂

ONE SIZE

Cap in twill with vintage look. Curved screen and 6 panels. Adjustable with metal buckle at the back. One Size.

100% COTTON



LAST CHANCE

THE LAST OPPORTUNITY TO BUY THE FOLLOWING
ITEMS BEFORE THEY'RE GONE FOREVER!



100 WHITE



400 RED



900 BLACK

RIPLEY 2145006 ♂

S-3XL

Mens polo with 3 buttons at front placket, side slits and contrast neck tape. 2 layer collar.

97% COTTON 3% ELASTANE, 240 G/M²



400 RED



600 NAVY

HARTLINE 2135019 ♂
AURORA 2125020 ♀

S-XXL
XS-XL

Polo in single jersey in Pima combed Baumwolle quality. Argyle check knitted pattern on right side of chest, neck tape. Flat knit collar and bottom sleeve.

100 % PIMA COTTON, 220 G/M²



100 WHITE



400 RED



900 BLACK

RAWLINS 2145007 ♂

S-3XL

Mens polo with 3 buttons at front placket, side slits and contrast neck tape. Stitched eyelets at armpit, flat lock seams at chest, collar with contrast stripes and mesh ending.

97% COTTON 3% ELASTANE, 240 G/M²

100 WHITE



900 BLACK

LAFAYETTE 2124001 ♀

S-XXL

Short-sleeved, round-neck ladies top with slim-fitted shape.

90% COTTON, 10% LYCRA®, 220 G/M²910
ANTHRA-
CITE

KENTON 2113023 ♂

S-3XL

SIDNEY LADY BLOUSE 2123011 ♀

XS-XXL

Exclusive high quality men's shirt with short sleeves. Easy care-treated with taped seams. Chest pocket and engraved buttons.

100% COTTON POPLIN

955 FADED
GREY

AMHERST VINTAGE POLO 2135028 ♂

S-3XL

AMHERST VINTAGE POLO WOMAN 2125029 ♀

XS-XXL

Collar-T polo. Single jersey with woven collar. Hidden buttons at front placket. Enzyme wash gives a vintage look.

100% COTTON, FLAT KNIT 280 G/M². HEAVY ENZYME WASH.472 LIGHT
PINK

BRISBANE 2113015 ♂

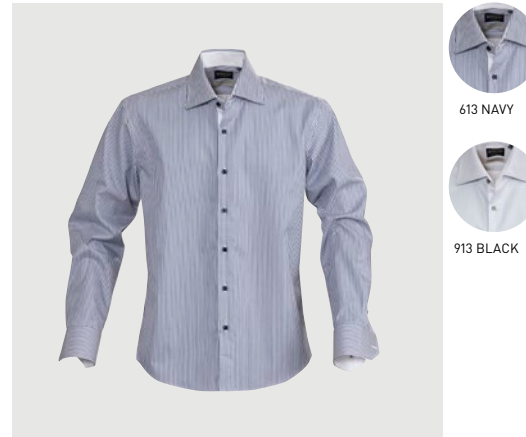
S-XXL

DORRIS 2123015 ♀

S-XXL

Classical oxford shirt with buttons in white pearl. Button-down collar and single chest pocket. Easy care treated.

100% COTTON



RENO 2113031 ♂

S-3XL

High quality shirt in combed cotton. Shirt in easy care treated fabric and enhanced lining seams, collar and sleeve ends. Striped pattern with contrast fabric under collar, placket and bottom sleeve. Modern fit.

100% COMBED COTTON



WESTMORE 2112509 ♂

S - 3XL

WESTMORE WOMAN 2122508 ♀

XS-XXL

Fine knit V-neck sweater. Doublefolded single knit at neck. 1 x 1 rib at cuff and hem. 220 g/m².

100 % BARUFFA MERINO WOOL, 14 GG. 220 G/M².

TRIBECA 2113032 ♂

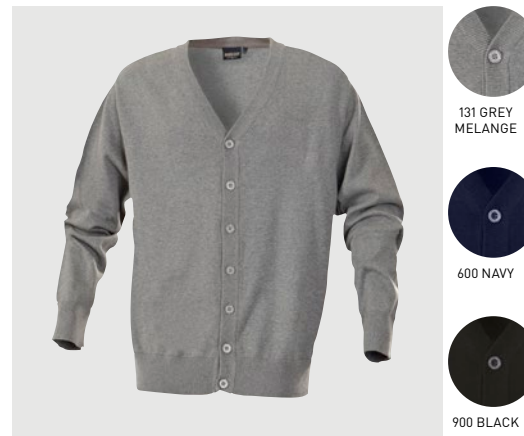
S-3XL

TRIBECA WOMAN 2123022 ♀

XS-XXL

High quality shirt in combed cotton. Shirt in Easy Care treated fabric and enhanced lining seams, collar and sleeve ends. Check pattern with contrast fabric under collar, placket, sleeve and neck tape. Modern fit with cutting seams at back.

100% COMBED COTTON



KNOWVILLE 2112501 ♂

S-3XL

Cardigan in soft cotton quality. Ribb with elastane at sleeve and bottom hem.

100% COTTON



NOTTINGMOON 2112503 ♂

S-3XL

NOTTINGMOON LADY 2122503 ♀

XS-XXL

V-neck knitted sweater - men. Fully fashion, 2 x 2 rib at bottom and btm sleeve.

100% COTTON, 12 GG. 240 G/M².

LAST CHANCE

THE LAST OPPORTUNITY TO BUY THE FOLLOWING
ITEMS BEFORE THEY'RE GONE FOREVER!



565 BLUE
FOG

SONETTE 2112510 ♂
SONETTE WOMAN 2122507 ♀

S-3XL
XS-XXL

Fine knitted cardigan. Men's style with full zip and double knitted collar.
Buttomed ladies cardigan with open round neck. Folded at sleeve and bottom
hem.

50% COTTON, 50% ACRYLIC (DRALON®), 12 GG. 230 G/M².



565 BLUE
FOG

PORTLAND 2112508 ♂
PORTLAND WOMAN 2122506 ♀

S-3XL
XS-XXL

Crew neck knitted sweater. 1 x 1 rib at neck, bottom and sleeves.

50% COTTON, 50% ACRYLIC (DRALON®), 12 GG. 230 G/M².

LAST CHANCE

THE LAST OPPORTUNITY TO BUY THE FOLLOWING ITEMS BEFORE THEY'RE GONE FOREVER!



600X NAVY



704X MOSS GREEN

HARDIN 2132025 ♂
HARDIN WOMAN 2122041 ♀

S-3XL
XS-XXL

Hoodie with raglan sleeves and half-moon in the neck. Tone on tone drawstrings with rubber bullet point end. Kangaroo pocket on the front. Brushed on the inside. Ribbed ending at sleeves and bottom hem. Certificates: Oeko-Tex 100, recycled polyester & ecological cotton.

80% ORGANIC COTTON, 20% RECYCLED PES, 300 G/M²



600X NAVY



704X MOSS GREEN



900X BLACK

ALDER 2132024 ♂
ALDER WOMAN 2122040 ♀

S-3XL
XS-XXL

College sweater. Certifications: Oeko-Tex, recycled polyester and ecological cotton.

80% ORGANIC COTTON, 20% RECYCLED PES, 300 G/M²



704X MOSS GREEN



900X BLACK

MELVILLE 2132026 ♂
MELVILLE WOMAN 2122042 ♀

S-3XL
XS-XXL

Full zip sweater with half-moon in the neck. Contrast, metal look nano membrane zip at center front and side pockets. Brushed on the inside. Ribbed ending at sleeves and bottom hem. Oeko-Tex 100 certified.

80% ORGANIC COTTON, 20% RECYCLED PES, 300 G/M²



100 WHITE



400 RED

NOVAHILL 2132019 ♂

S-3XL

Sweatshirt jacket in heavy jersey with unbrushed inside. Contrasting tape in neck, along zipper and at bottom rib. Front pockets. Half-moon in neck with printed label. 1x1 rib with elastane in rib. Rib detail at neck.

80% COTTON 20% POLYESTER, 320 G/M²



620 METAL BLUE

DEER RIDGE 2131039 ♂

S-3XL

Quilted lightweight jacket with Thermolite® Micro. Fully lined. Hidden hood in the collar (invisible zip). Reversed coil zippers. Elastic binding at bottom hem and sleeves. The jacket can be tucked into the frontpocket as a travelbag.

SHELL FABRIC; 100% PES, CIRE FINISH ON THE INSIDE, 56 GSM WITH 100% PES PADDING (THERMOLITE® MICRO, 60 GSM). LINING; 100% NYLON



477 RUBINE RED

303 ORANGE

STONEWALL 2141000 ♂

S-XXL

MUIRFIELD LADY 2151000 ♀

S-XXL

Men's rain jacket. Front pockets and back pocket (perfect for scorecard and glove) with zipper. Drawstring at bottom hem. Soft and warm microfleece in collar. Reflective piping.

100% POLYESTER, SIDE PANELS: 86% POLYESTER, 14% ELASTANE. LINING: 100% POLYAMIDE, MESH 100% POLYESTE



137 LIGHT GREY

600 NAVY

ISLANDBLOCK 2131038 ♂

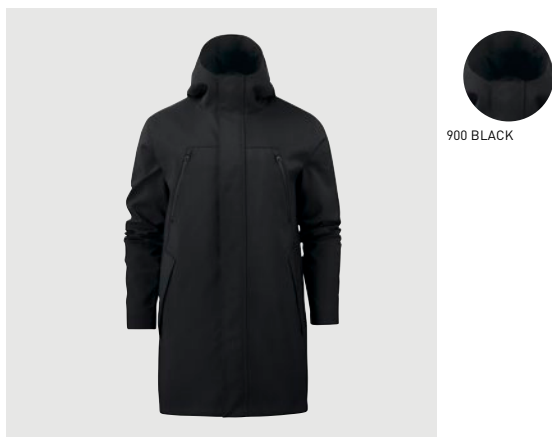
S-3XL

ISLANDBLOCK WOMAN 2121031 ♀

XS-XXL

Functional shell jacket with contemporary design and modern fitting. Zip under armhole makes for better ventilation. Sleeve pocket, front pockets, chest pocket and inner pocket. High abrasion resistant Cordura on elbows and lower back. High front collar, adjustable hood, reflective piping in body colour and contrasting YKK zips.

SHELL FABRIC: 94% POLYESTER, 6% ELASTHANE, 150 G/M² (WP 8000 / MVP 5000) & 100 % NYLON CORDURA, 223 G/M²



900 BLACK

HURSTBRIDGE 2111034 ♂

S-3XL

City coat with hood. Adjustable cord at waist and bottom hem. Leather-like stoppers and zip pullers. Cotton lined (sleeves in nylon). C6 water repellent finish. Black metal zippers at front and chest pockets. Buttoned windshield. Wide welted pockets with zippers at front. Zipped inner pocket.

SHELL FABRIC; 52% COTTON, 45% NYLON, 3% ELASTANE (SANDWICH CONSTR.). BODY LINING; 100% COTTON, POPLIN SLEEVE LINING; 100% NYLON



400 RED

532 BLUE

CONCORD 2131036 ♂

S-3XL

BRIDGEPORT 2121025 ♀

XS-XL

Functional jacket with zippers and piping in white contrast. Light, down like padding and soft polar fleece inside collar and front pockets. Waterproof, wind proof and highly breathable. Detachable hood and hidden ventilation zippers at sides. Elastic drawstring at hood and bottom hem. Two front pockets, one sleeve pocket and one inner pocket with cord opening for head phones.

100 % NYLON



105 EGGS-HELL

OVERLAND 2131033 ♂

S-3XL

WINGPOINT 2121021 ♀

S-XXL

Shell jacket in Vent Air® quality, detachable hood, scooped back hem, contrast zippers, lining and printed check. Pre curved sleeves, elastic at bottom hem and hood, Velcro adjustment at bottom sleeves. Taped seams.

100 % NYLON WITH VENT-AIR COATING W/P 3000 MM MVP 4000 G/M²/24H, LINING: 100 % POLYESTER



JAMES
HARVEST
sports *wear*